

Analytical Support for Public Spaces Protection Order (PSPO) Application

Southend-on-Sea Borough Council

Any maps within this document are reproduced from Ordnance Survey mapping with the permission of the Controller of her Majesty's Stationery Office © Crown Copyright. Licence No. 100019680

PSPO Proposed Area



N.B All data sets are excluded to the highlighted area.

Working to make
lives better
www.southend.gov.uk



Key Findings

77%

of the 9 neighbourhoods are recorded as highly deprived

40%

of SBC Community Safety complaints received are related to Begging/Vagrancy

76%

of SBC Community Safety complaints received occurs in Milton Ward

16%

Of incidents recorded by Community Safety Officers are related to Begging/Vagrancy

9%

Of incidents recorded by Community Safety Officers are related to Rough Sleeping

4%

of SBC Begging/Vagrancy complaints occur in Thorpe Bay & West Shoebury Wards

15

Unorganised Car Cruising events occurred in a one year period

45

Litter Picks have taken place and **102** rubbish bags collected

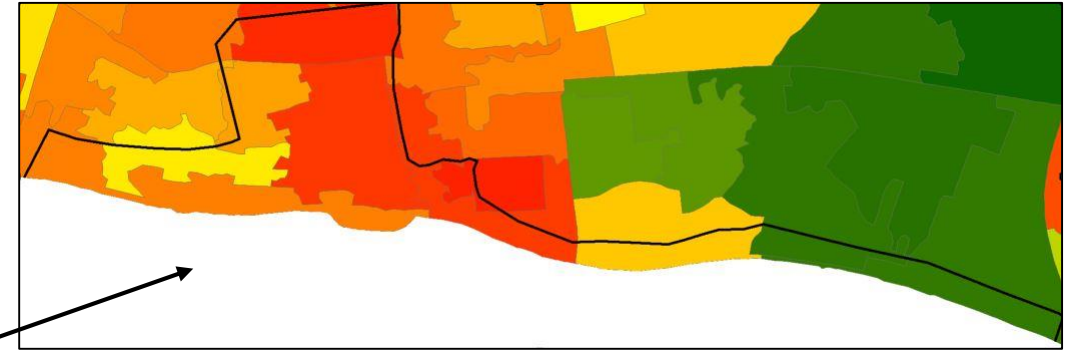
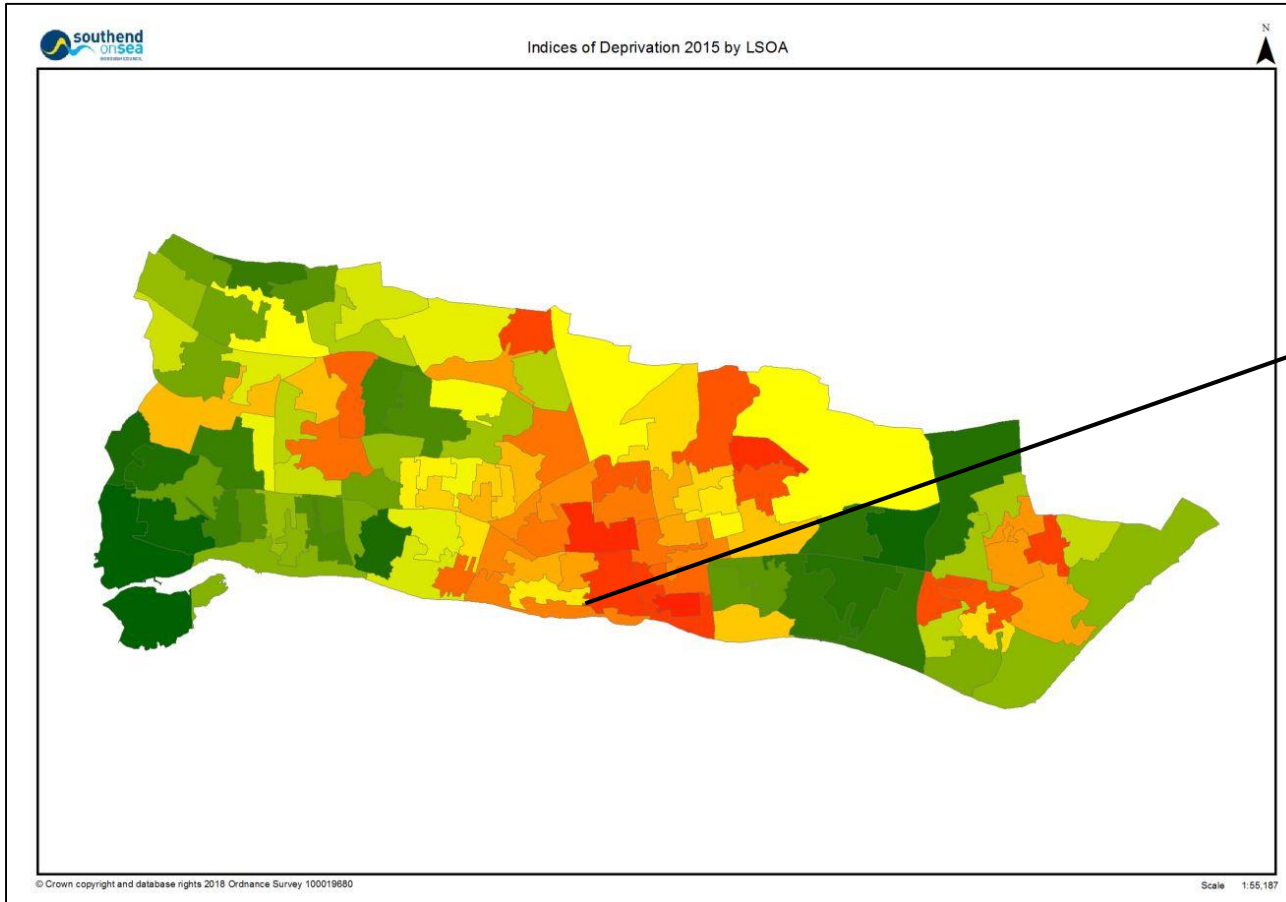
10

Unauthorised Occupation of Land Notices was served on encampment's in a 5 month period

57%

of issues reported at LCMs relate to drug activity

Indices of Deprivation 2015



Areas shaded red to orange show highly deprived areas. The yellow indicates areas of average deprivation and the green shows the least deprived neighbourhoods.

- The geographical spread of deprivation is mostly clustered towards the centre of Southend-on-Sea.
- 9 Neighbourhoods will be covered within the suggested PSPO;
 - 77% of those neighbourhoods are highly deprived
 - 22% of those neighbourhoods are least deprived

The Indices of Deprivation 2015 provide a set of relative measures of deprivation for small areas (Lower-layer Super Output Areas) across England, based on seven domains of deprivation.

The domains were combined using the following weights to produce the overall Index of Multiple Deprivation:

- Income Deprivation (22.5%)
- Employment Deprivation (22.5%)
- Education, Skills and Training Deprivation (13.5%)
- Health Deprivation and Disability (13.5%)
- Crime (9.3%)
- Barriers to Housing and Services (9.3%)
- Living Environment Deprivation (9.3%)

Working to make
lives better
www.southend.gov.uk

 **southend
onsea**
BOROUGH COUNCIL

Strategic Intelligence Assessment (SIA)

The 2018/19 SIA identified the Town Centres to be hotspot area for crime and anti-social behaviour. It was made a priority for the Community Safety Partnership, to focus on and reduce trends in this area. These findings was reiterated in 2019/20 SIA.

Problems identified by professionals for the town centre included (but not excluded to);

- Street Drinking
- Begging/Vagrancy
- Rough Sleepers
- Youth ASB
- Shoplifting
- Drug Activity

Problems identified by residents included (but not excluded to);

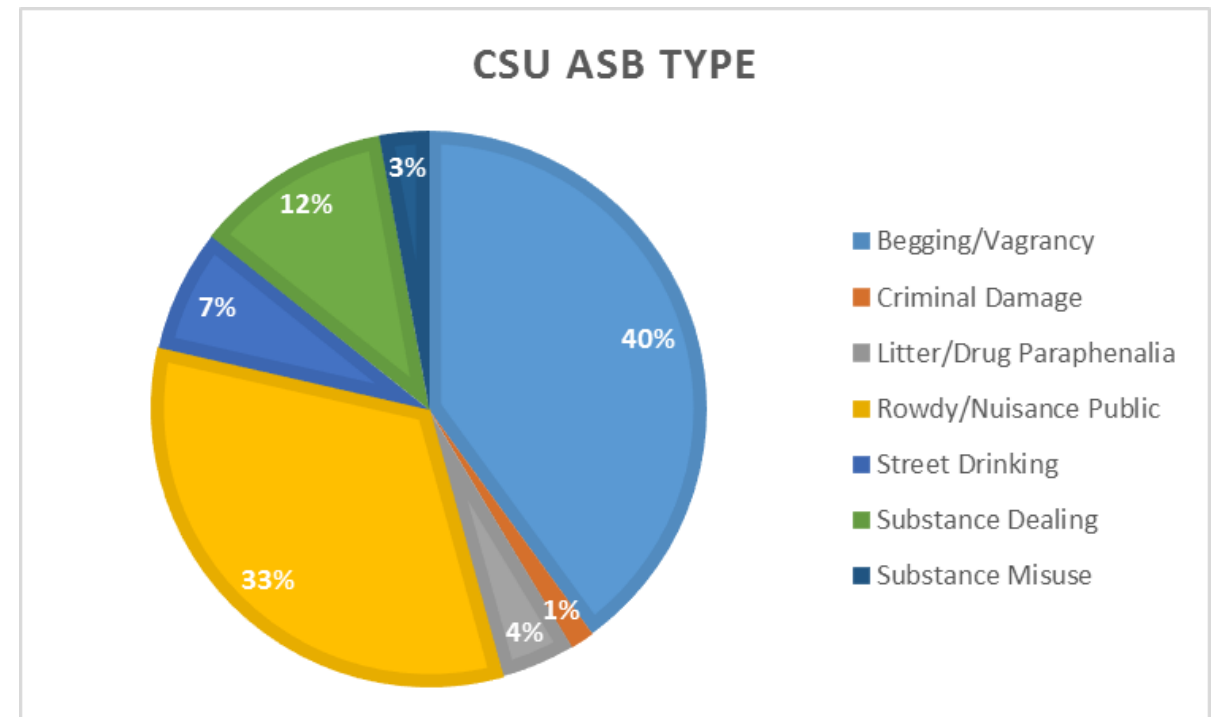
- Drug Activity
- Anti-Social Behaviour
- Knife Crime



Community Safety Unit (CSU) Complaints Received

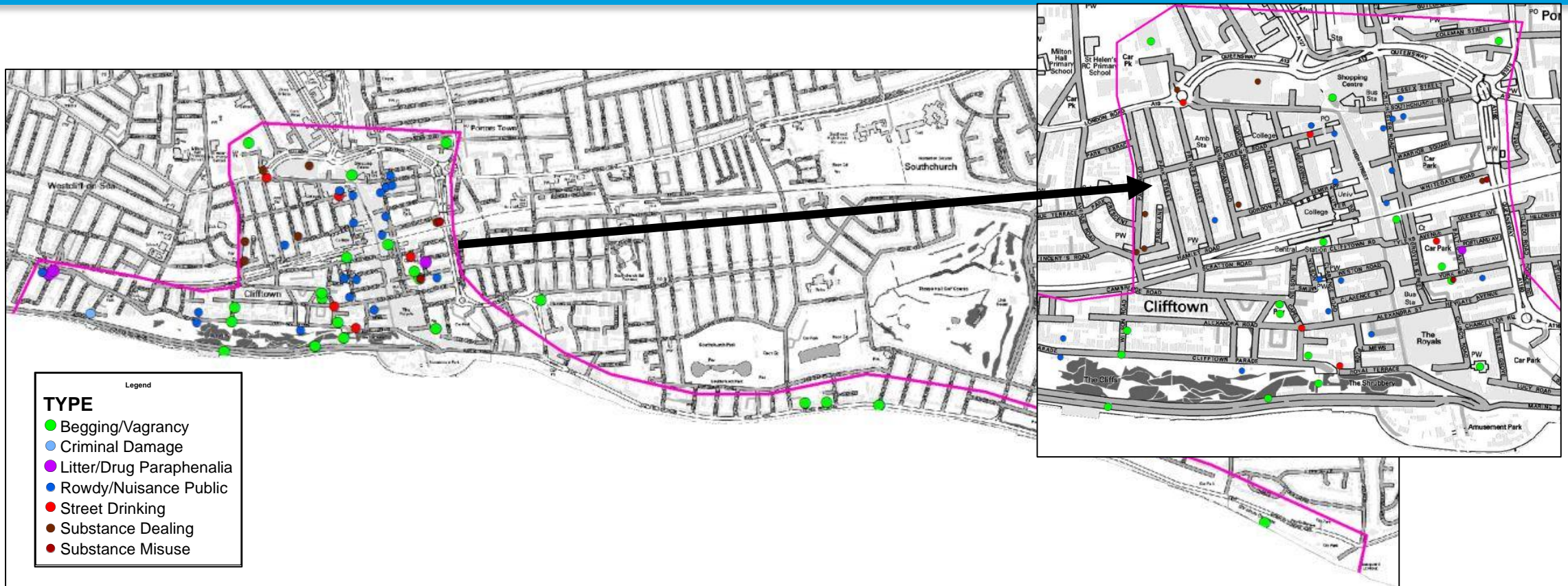
The CSU received 222 reports between 1st April 2018 – 31st March 2019. Of these, 70 complaints occurred in the proposed PSPO area and was related to;

- Rowdy/Nuisance Public – 33%
- Substance Misuse – 3%
- Substance Dealing -12%
- Street drinking – 7%
- Criminal Damage -1%
- Begging/Vagrancy – 40% and;
- Litter/Drug Paraphernalia - 4%



Community Safety Unit (CSU) Primary Hotspot

76% of SBC Community Safety Complaints received occurs in Milton Ward



Mapped by postcode centroid

NOTE: The map above shown contains 70 complaints received into the CSU between 1st April 2018 – 31st March 2019. Which contain the following ASB types; Rowdy/Nuisance Public, Substance Misuse, Substance Dealing, Street drinking, Criminal Damage, Begging/Vagrancy and Litter/Drug Paraphernalia

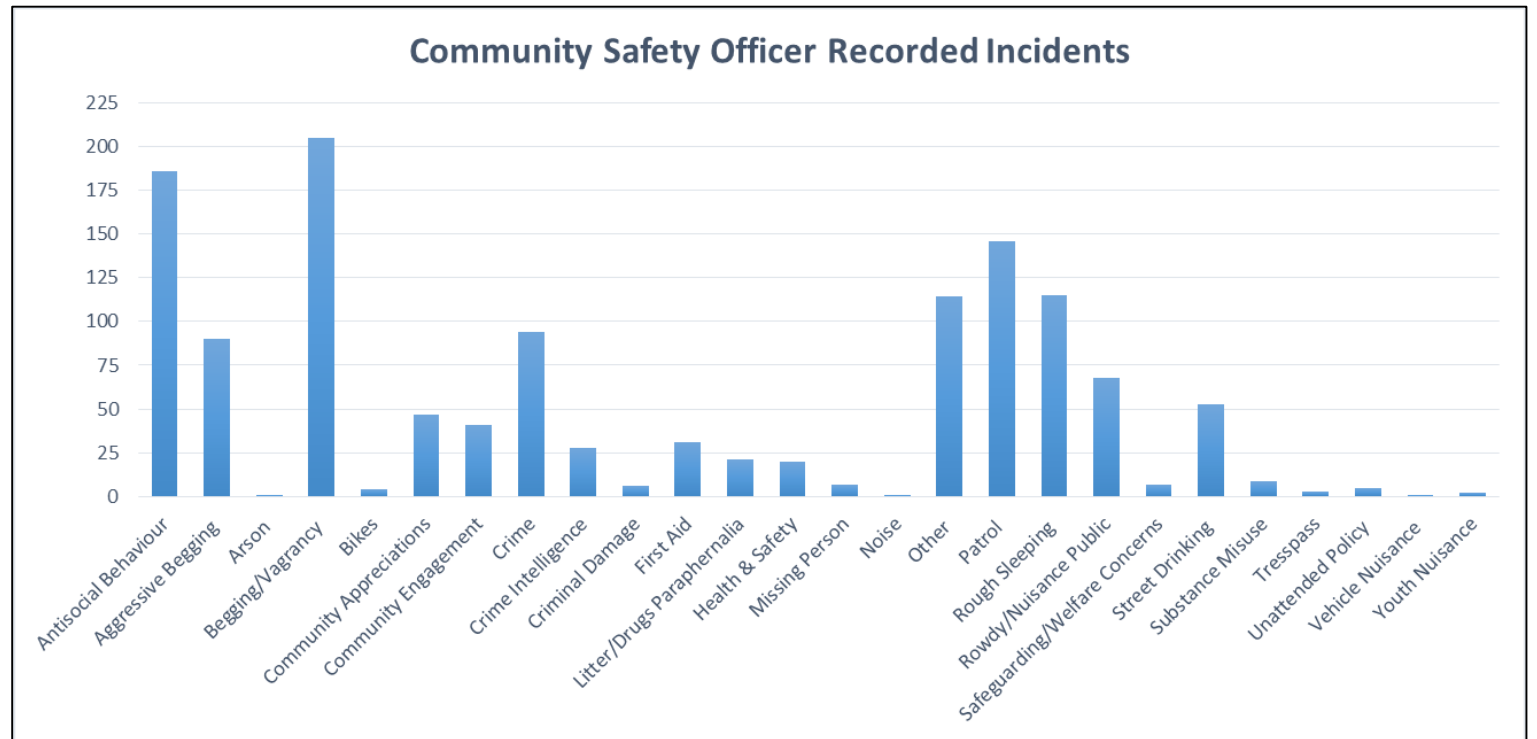
Working to make
lives better
www.southend.gov.uk

southend
onsea
BOROUGH COUNCIL

Community Safety Officers Recorded Incidents

Between 13th October 2018 and 30th April 2019, Community Safety Officers have recorded 1305 incidents*

- 15.7% of recorded incidents relate to Begging/Vagrancy
- 14.2% of recorded incidents relate to Anti-Social Behaviour
- 8.8% of recorded incidents relate to Rough Sleeping



*The majority of these reports relate to Southend Town Centre, however some incidents may relate to targeted patrols. Due to the way the data is currently collected, it is not possible to separate the two.

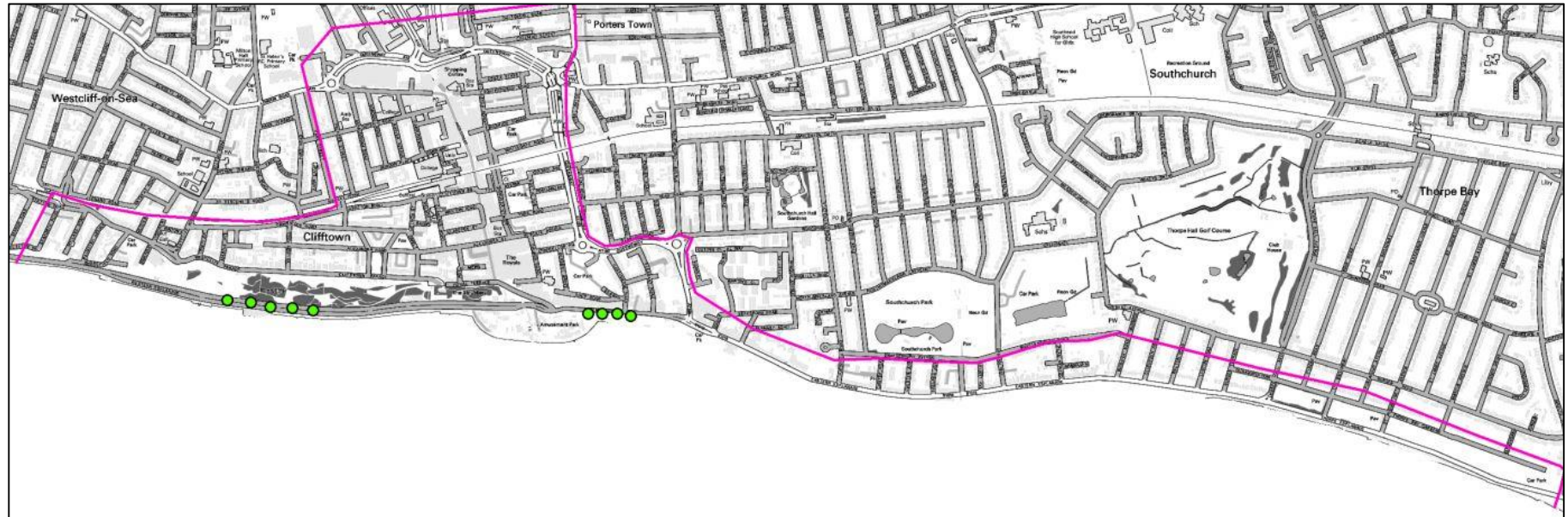
NOTE: Community Safety Unit employed Community Safety Officers to tackle anti-social behaviour on Southend High Street and nearby areas. An interim team – Stambridge was employed whilst SBC CSOs was recruited. Data has been combined. 'Other' has been recorded by Stambridge

Car Cruising

In 2016-17 Southend attracted many car cruising events, an injunction was secured by Southend Borough Council to prohibit these events which have not been authorised by Essex Police or the Council. In a 1 year period 15 events was recorded. On the 21st September 2017 a Borough wide injunction was obtained. Since this order has been obtained, Southend Council has noted a significant reduction in these type of offences. However cruises still occur and mainly takes place on Western Esplanade and Marine Parade

Southend-on-Sea is a location which attracts numerous car cruising events throughout the year. Car cruising can be described as a congregation of drivers and/or passengers of two or more vehicle who take part in the following:

- Driving in convoy
- Excess speed
- Racing other motor vehicles
- Performing stunts in a motor vehicle
- Sounding horns or playing radios
- Dropping litter
- Shouting or swearing at, abusing to threatening or otherwise intimidating another person.



Southend Borough Council Parks Team

From November 2018 to April 2019 Southend-on-Sea Parks Team have given 10 Unauthorised Occupation of Land notices to people who have set up encampments. These notices have been served at Southend Cliff Gardens and surrounding areas.

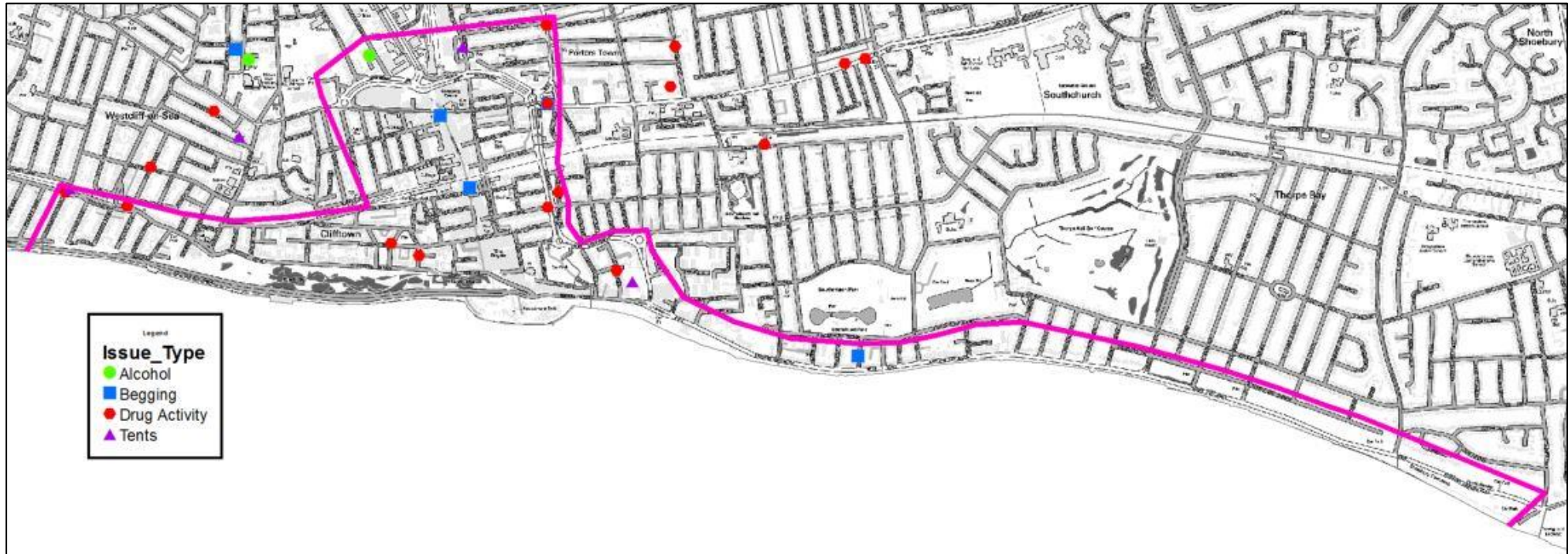
Make Southend Sparkle Coordinator from the Parks team has coordinated 45 Litter picks from 1st April 2018 – 28th February 2019 in the PSPO area and collected 102 Rubbish bags – an average of 2 and a quarter bags per pick.



Local Community Meetings (LCM)

The map illustrates areas residents are concerned about Alcohol, Begging, Drug Activity and Tents. 14 reports are within the proposed PSPO area;

- 57% of issues reported relate to drug activity
- 21% of issues reported relate to Begging
- 14% of issues reported relate to Tents



Mapped by postcode centroid

Local community meetings are held with the public in Southend on a bi-monthly basis to allow residents to raise ASB and crime related concerns. The meetings are also attended by some members of the partnership and aims to speak with communities about their concerns, gather information and help find answers to local problems

Working to make
lives better
www.southend.gov.uk

southend
onsea
BOROUGH COUNCIL